

4TH ANNUAL

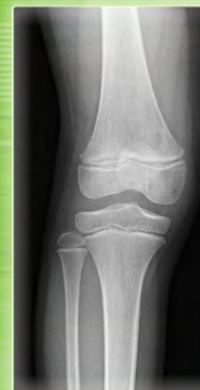
# Pediatric Orthopedic SURGICAL TECHNIQUES LAB

## CHAIRMEN

- Todd Milbrandt, MD
- Jeffrey Sawyer, MD

## LOCATION

The Westin Memphis  
Beale Street &  
MERI Lab  
Memphis, TN



JOINTLY PROVIDED BY:



BROADWATER<sup>LLC</sup>

*"Excellent course with expert-led discussions."*

—2018 ATTENDEE

**OCT. 4**  
-through-  
**OCT. 5**  
**2019**

**FOR SENIOR  
RESIDENTS,  
FELLOWS, and  
EARLY CAREER  
SURGEONS**

## COMPREHENSIVE:

- 10 Hours of Hands-on Cadaveric Labs
- Trauma, Deformity, Infection, Sports
- Upper Extremities
- Lower Extremities
- Spine
- Hip

ENDORSED BY:





## Dear Colleague:

Pediatric orthopedic surgery is complex and challenging, especially in the early stages of your career. That is why we created The Pediatric Orthopedic Surgical Techniques Lab. It's an intensive two-day cadaveric lab, designed to enhance your surgical skills. Participants can expect:

- **10 hours of cadaveric, hands-on labs** covering key surgical techniques, including arthroscopy
- Insightful lectures on indications and rationale for specific surgical techniques
- Topics covering upper extremities, spine, hip and lower extremities, including trauma, deformity and sports
- Sessions taught by outstanding US and international faculty

To ensure that participants receive a highly interactive educational experience, with an **excellent faculty to participant ratio**, we are limiting the number of spaces available in the program. The course has sold out each year it has been offered. We highly recommend that you register early to secure your spot.

Please review this brochure and register today! We hope to see you in Memphis this fall.

Best regards,

**Todd Milbrandt, MD & Jeffrey Sawyer, MD**  
COURSE CHAIRMEN

*This activity is supported by an educational grant from The OrthoPediatrics Foundation for Education & Research.*

## chairmen

### **Todd Milbrandt, MD**

*Mayo Clinic*  
ROCHESTER, MN

### **Jeffrey Sawyer, MD**

*Campbell Clinic*  
GERMANTOWN, TN

## faculty

### **Eric Edmonds, MD**

*Rady Children's Hospital*  
SAN DIEGO, CA

### **Nick Fletcher, MD**

*Emory Orthopaedics and Spine Center*  
ATLANTA, GA

### **Martin Herman, MD, PhD**

*Drexel University College of Medicine*  
PHILADELPHIA, PA

### **Christine Ho, MD**

*Texas Scottish Rite Hospital for Children*  
DALLAS, TX

### **Derek Kelly, MD**

*Campbell Clinic*  
GERMANTOWN, TN

### **Cara Beth Lee, MD**

*Swedish Medical Center*  
SEATTLE, WA

## who should attend

**Pediatric orthopedic surgery  
senior residents, fellows, and  
early career stage surgeons.**

### **Fergal Monsell, PhD, FRCS (Orth)**

*Royal Hospital for Children*  
BRISTOL, UK

### **Reid Nichols, MD**

*Nemours/Alfred I. duPont Hospital  
for Children*  
WILMINGTON, DE

### **Eduardo Novais, MD**

*Boston Children's Hospital*  
BOSTON, MA

### **Todd Ritzman, MD**

*Akron Children's Hospital*  
AKRON, OH

*Faculty subject to change*

**As a result of this activity, participants should be better able to:**

Describe the indications and rationale for the surgical management of various pediatric orthopedic trauma, deformity and sports injury disorders.

Demonstrate familiarity with the surgical techniques used to manage various pediatric orthopedic trauma, deformity, and sports injury disorders.

# course objectives

## PHYSICIAN ACCREDITATION

This activity has been planned and implemented in accordance with the Essential Areas and policies of the Accreditation Council for Continuing Medical Education through the joint providership of Medical Education Resources and BroadWater. Medical Education Resources is accredited by the ACCME to provide continuing medical education for physicians.

## CREDIT DESIGNATION

Medical Education Resources designates this live activity for a maximum of *15.0 AMA PRA Category 1 Credits™*. Physicians should only claim credit commensurate with the extent of their participation in the activity.

## JOINT PROVIDERSHIP

This program is jointly provided by Medical Education Resources, Inc. and BroadWater, LLC.

program

FRIDAY

OCTOBER

4

<b>6:45 AM</b>	Shuttle Departures from The Westin Memphis to MERI Lab
<b>7:15</b>	Registration and Continental Breakfast
<b>7:45</b>	Welcome
<b>7:50</b>	<b>SESSION 1: Upper Extremities—Trauma</b>
	Closed Reductions and Casting
	Supracondylar Humerus Fracture
	Lateral Condyle Fracture
	Medial Epicondyle Fracture
	Flexible Nail Forearm
	General Discussion & Cases
<b>10:00</b>	Refreshment Break
<b>10:20</b>	<b>LAB #1: Upper Extremities—Trauma</b>
	Supracondylar Pinning with “Blind Medial Pin” and Open Approach
	Supracondylar ORIF—Anterior Approach
	Lateral Condyle Approach and Pinning vs. Screw Fixation
	Medial Epicondyle Reduction and Pinning
	Forearm Nailing
<b>12:30 PM</b>	Lunch with Career Development Faculty Panel

<b>1:15</b>	<b>SESSION 2: Hip and Lower Extremity—Infection and Trauma</b>
	Septic Hip Arthrotomy
	Femoral Fractures (Proximal / Shaft)
	Tibia Fractures (Shaft / Transitional Fractures)
	Open Pediatric Trauma
	Lower Extremity Cases and Discussion
<b>2:35</b>	Refreshment Break
<b>3:00</b>	<b>LAB #2: Hip and Lower Extremity</b>
	Anterior Approach for Hip Drainage
	Direct Lateral Approach (Locking Plate / Blade Plate and Proximal Femoral Osteotomy)
	Femoral Bridge Plating or Elastic Nails
	Tibial Flexible Nail
	Ankle Approaches (Tri-plane / Tillaux)
<b>5:15</b>	Adjourn, Shuttles to The Westin Memphis
<b>6:00-8:00</b>	Reception

program

SATURDAY

OCTOBER

5



6:45 AM	Shuttle Departures from The Westin Memphis to MERI Lab
7:15	Continental Breakfast
7:25	Welcome

7:30	<b>SESSION 3: Hip Osteotomies / Deformity / Foot</b>
	Deformity Analysis
	Hip Osteotomies
	SCFE / Hip Dislocation
	Limb Length Discrepancy
	Clubfoot
	Clubfoot Surgical Video
9:05	Refreshment Break

	<b>LAB #3: Hip Osteotomies / Deformity / Foot (Simultaneous Session)</b>
	<i>Participants attend either Lab 3A or 3B depending on their preference</i>
9:20	<b>3A: PAO Hip</b>
	• PAO Demo Video
	• Hands-on PAO technique
9:20	<b>3B: Pediatric Orthopedic Foundations</b>
	<b>Cadaveric Hands-on:</b>
	• SCFE
	• Tibialis Transfer
	<b>Sawbone Hands-on:</b>
	• Club Foot Casting
	• Limb Lengthening
11:30	Lunch

Program subject to change. Labs will only utilize adult cadavers.

12:00 PM	<b>SESSION 4A: Sports—Knee (Simultaneous Session)</b>
	<i>Participants attend either Lab 4A or 4B depending on their preference</i>

	Principles of Pediatric Sports Surgery: "Kids Aren't Small Adults"
	Pediatric Knee Injuries (Discoicd Meniscus, Meniscus Tears, OCD)
	Patella Femoral Realignment
	Pediatric ACL and Tibial Spine

1:15	<b>LAB #4A: Sports—Knee</b>
	ACL Techniques
	MPFL Reconstruction
	Meniscal Tears / Discoicd

12:00	<b>SESSION 4B: Spine (Simultaneous Session)</b>
-------	---

	Pedicle Screws, Sacral & Pelvic Fixation
	Osteotomy Types (SP, PSO, VCR)
	Correction Strategies for AIS (Derotation, Reduction, etc.)
	Growth-friendly Surgery

1:15	<b>LAB #4B: Spine</b>
	Demo: Rod Distraction
	Facetectomy
	Pedicle Screws (Thoracic, Lumbar)
	Correction Techniques for AIS (Derotation, Reduction, etc.)
	Growth Rod Constructs (Advanced)
3:15	Adjourn
3:30	Shuttles to The Westin Memphis and Memphis Airport



## general information

### REGISTRATION FEES

**Surgeons:** \$745

**Senior Residents & Fellows:** \$645

Registration includes meals, course materials, and sessions on Friday & Saturday.

**Late Registration Fee:** \$100  
(after September 6, 2019)

### REGISTRATION

**Register early as the space will fill rapidly.** Individuals who register after the course is full will be placed on a wait list and contacted if space becomes available.

### TRAVEL GRANTS FOR SENIOR RESIDENTS AND FELLOWS

A small number of grants of up to \$650 for travel expenses are available for senior residents and fellows who plan to attend this program.

Send your CV to Christy Gill (cgill@broad-water.com) to apply.

**CVs must be received by August 5, 2019 for consideration.**

### REFUNDS

A full refund will be provided, less a \$175 administrative fee, dependent upon written notice being received by **September 6, 2019**. Refunds will not be made after this date. Substitutions are allowed at any time but must be submitted in writing.

### CANCELLATION POLICY

In the unlikely event of insufficient enrollment, we reserve the right to cancel the course up to 21 days prior to the course. Registrants will be notified by certified mail and registration fees will be refunded.

**FAST, EASY & SECURE REGISTRATION ONLINE AT**  
[www.RegOnline.com/POST2019](http://www.RegOnline.com/POST2019)

If registrant(s) are unable to attend the course due to weather delays, strikes, or other reasons not directly controlled by the meeting organizers, registrants will not be refunded. Airline and other costs incurred by the registrant are the responsibility of the registrant and will not be refunded.

### ATTENDANCE

The course chairmen reserve the right to refuse admission to anyone whose presence is considered to be incompatible with the course objectives.

### GDPR

In accordance with the EU's GDPR, no European mailing or email addresses will be given to participating companies.

### COMMERCIAL SUPPORT

Various medical companies have been invited to exhibit at this course. Full disclosure of financial and other support will be disclosed in the course syllabus materials.

### DISCLOSURE POLICY

Medical Education Resources insures balance, independence, objectivity, and scientific rigor in all of its educational activities. In accordance with this policy, MER identifies conflicts of interest with its instructors, content managers, and other individuals who are in a position to control the content of an activity. Conflicts are resolved by MER to ensure that all scientific research referred to, reported, or used in a CME activity conforms to the generally accepted standards of experimental design, data collection, and analysis. MER is committed to providing its learners with high-quality CME activities that promote improvements or quality in health care and not the business interest of a commercial interest.

## hotel / lab facility

### HOTEL

The course hotel is:

#### **The Westin Memphis Beale Street**

170 Lt. George W. Lee Avenue  
Memphis, TN 38103  
Tel: 901-334-5900

#### **Room Rate**

\$210.00 (plus tax) for single  
or double occupancy



### Reservations Procedure

Please call **800-937-8461** and ask to book a room in the **BroadWater block** to receive the contracted group rate.

**Or book online at:**

<https://www.marriott.com/event-reservations/reservation-link.mi?id=1562077601996&key=GRP&app=resvlink>

### Deadline

It is recommended that participants book their hotel rooms as soon as possible, as space will fill rapidly. Reservations at the group rate may not be available after **September 12, 2019** or if the room block is full.

### LAB FACILITY

The lectures and lab sessions  
will take place at:

#### **The Medical Education & Research Institute (MERI)**

44 South Cleveland  
Memphis, TN 38104

All labs will utilize only adult cadavers.

Shuttle transportation will be provided between The Westin Memphis Beale Street and MERI at the beginning and end of each day of the course.

*“Great faculty to attendee  
ratio; very easy to ask  
questions and gain  
knowledge”*

—2018 PARTICIPANT

### FOR ADDITIONAL INFORMATION PLEASE CONTACT:

**BroadWater, LLC**  
301 S. County Farm Rd.  
Suite L  
Wheaton, IL 60187 USA

**T:** (630) 681-1040

**F:** (630) 682-5811

**E:** [cgill@broad-water.com](mailto:cgill@broad-water.com)

**W:** [broad-water.com](http://broad-water.com)



301 S. County Farm Road, Suite L  
Wheaton, IL 60187 USA

[www.Broad-Water.com](http://www.Broad-Water.com)

Presort Standard

U.S. Postage

**PAID**

Carol Stream, IL

Permit No. 1096

**OCT. 4**  
*-through-*  
**OCT. 5**  
**2019**

4TH ANNUAL

**Pediatric Orthopedic**

SURGICAL TECHNIQUES LAB