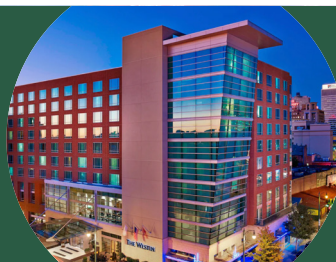


October 13-14, 2023

Inaugural Kinematic Knee Alignment Course

PROGRAM CHAIR

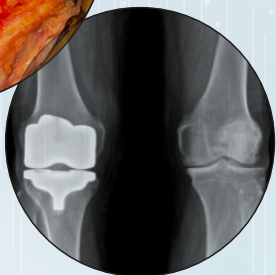
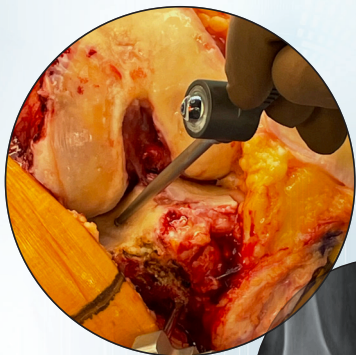
Michael D. Hellman, MD



MEDICAL EDUCATION
AND RESEARCH INSTITUTE

THE WESTIN HOTEL
BEALE STREET

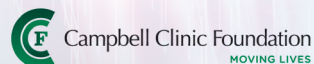
MEMPHIS, TN



COURSE CO-CHAIR

Marcus C. Ford, MD

JOINTLY PROVIDED BY:





Our Mission

The Campbell Clinic Foundation exists to support medical education, orthopaedic research and patient care and outreach. We are affiliated with Campbell Clinic Orthopaedics, an internationally-recognized pioneer in orthopaedic surgery and group of orthopaedic physicians, researchers and allied health professionals located in the Mid-South region.

The Foundation facilitates surgeon education through medical residency and fellowship programs as well as leading-edge orthopaedic research and is committed to lifelong bone and joint health for all through diverse community outreach programs.

Dear Colleague:

We are excited to announce the first annual **Kinematic Knee Alignment Course**. Randomized controlled trials have shown superior clinical outcomes for kinematic alignment (KA) when compared to traditional mechanical alignment (MA) TKA. Now with reported excellent mid and long-term survivorship, KA is becoming a mainstream treatment option. Through lectures and cadaveric sessions, participating surgeons will have the opportunity to learn KA philosophy from world experts and execute surgical techniques with both manual instrumentation and cutting-edge surgical technology. We hope you'll join us in Memphis in October!

PARTICIPANTS: This course will be geared towards practicing orthopaedic surgeons and joint reconstruction fellows who perform TKA.

Best regards,

Michael D. Hellman, MD
PROGRAM CHAIR

Marcus C. Ford, MD
COURSE CO-CHAIR

Chair

Michael D. Hellman, MD

St. Luke's East Hospital
LEE'S SUMMIT, MO

Co-Chair

Marcus C. Ford, MD

Campbell Clinic Orthopaedics
GERMANTOWN, TN

Who Should Attend

Practicing orthopaedic surgeons performing TKA and joint reconstruction fellows.

Distinguished Faculty

Stefano Bini, MD, FRCSC

UCSF Medical Center
SAN FRANCISCO, CA

Nicholas Brown, MD

Loyola University Medical Center
MELROSE PARK, IL

Joseph W. Greene, MD

Louisville Hip and Knee Institute
LOUISVILLE, KY

Bryan Haughom, MD

Orthopedic Physicians Alaska
ANCHORAGE, AL

Stephen M. Howell, MD

Adventist Health
SACRAMENTO, CA

John J. Mercuri, MD, MA

Geisinger Musculoskeletal Institute
SCRANTON, PA

Jonathon M. Spanyer, MD

OrthoCincy
CINCINNATI, OH

Jeremy O. Statton, MD

Arthritis & Total Joint Specialists
ATLANTA, GA

Faculty subject to change.

Course Objectives

As a result of this activity, participants should be better able to:

- Define modern knee anatomy and its relationship to KA.
- Understand differences between KA, MA, and other personalized alignment techniques.
- Learn clinical outcomes, survivorship, and future technology advancements related to KA.
- Perform surgical techniques using both manual instrumentation and robotic techniques.

PHYSICIAN ACCREDITATION

In support of improving patient care, this activity has been planned and implemented by Medical Education Resources (MER) and BroadWater and CCF. MER is jointly accredited by the Accreditation Council for Continuing Medical Education (ACCME), the Accreditation Council for Pharmacy Education (ACPE), and the American Nurses Credentialing Center (ANCC), to provide continuing education for the healthcare team.



JOINTLY ACCREDITED PROVIDER™
INTERPROFESSIONAL CONTINUING EDUCATION

CREDIT DESIGNATION

Medical Education Resources designates this live activity for a maximum of *10.25 AMA PRA Category 1 Credits™*. Physicians should claim only the credit commensurate with the extent of their participation in the activity.

JOINT PROVIDERSHIP

This program is jointly provided by Medical Education Resources, Inc., Campbell Clinic Foundation and BroadWater, LLC.

CLICK TO REGISTER ONLINE

Program

FRIDAY
OCTOBER

13

7:00 AM Shuttles Depart Westin Beale Street to MERI Lab

7:20 Registration & Continental Breakfast *3rd Floor Main Dining Room*

8:00 **Welcome**
MICHAEL D. HELLMAN, MD; & MARCUS C. FORD *3rd Floor Auditorium*

SESSION 1

8:10 Modern Understanding of Knee Anatomy

8:25 History of Alignment Techniques

8:40 Origin of Kinematic Alignment

8:55 Discussion

9:10 Published Outcomes of Kinematic Alignment

9:25 Biomechanical Studies in Support of Kinematic Alignment

9:40 Why NOT Switch to Kinematic Alignment? Perspective from an MA surgeon

9:55 Discussion

10:10 Refreshment Break and Exhibits *3rd Floor Main Dining Room*

10:35 Fundamental Principles of Kinematic Alignment

10:50 Learning Curve with Calipered Kinematic Alignment—Avoiding Pitfalls

11:05 Application of KA to Difficult Cases—Where's the Limit to KA?

11:20 Discussion

11:35 Using Kinematic Alignment in Revision TKA

11:50 Panel Discussion

12:05 PM Lunch and Exhibits *3rd Floor Main Dining Room*

1:05 Proceed to Lab 1st Floor—Change into Scrubs

SESSION 2

1:15 Cadaver Lab—Calipered KA with manual instrumentation

3:45 Adjourn

3:55 Shuttles Depart MERI Lab to the Westin Hotel

6:00 PM Dinner and Discussion with Faculty and Participants

8:00 Adjourn



**Executing KA
with
Robotics**

Program

SATURDAY

OCTOBER

14

7:00 AM Shuttles Depart Westin Beale Street to MERI Lab

7:15 Breakfast *3rd Floor Meeting Room*

7:45 **Welcome**
MICHAEL D. HELLMAN, MD; & MARCUS C. FORD *3rd Floor Auditorium*

SESSION 3

7:50 Faculty Case Presentations and Group Discussion

8:30 Outcome Data of Advanced Technology in TKA

8:50 Discussion

8:55 Executing KA with Custom Cutting Guides and Navigation

9:15 Discussion

9:20 Executing KA with Robotics

9:40 Panel Discussion

9:50 Refreshment Break in 3rd Floor Main Dining Room

10:10 Proceed to Lab 1st Floor—Change into Scrubs

SESSION 4

10:20 Cadaver Lab with KA Robotics and Technologies

12:30 PM Grab-and-Go Lunch and Adjourn

12:40 Shuttles to Airport



*Biomechanical Studies
in Support of
Kinematic Alignment*

Registration

REGISTRATION FEES

Surgeons: \$945

Residents/Fellows: \$745

Registration includes course materials and sessions on Friday and Saturday.

REGISTRATION

Register early as the space will fill rapidly. Individuals who register after the course is full will be placed on a wait list and contacted if space becomes available.

CANCELLATION

A full refund will be provided, less a \$150 administrative fee, dependent upon written notice being received by **September 1, 2023** by email to: **KJohnston@broad-water.com**.

Refunds will not be made after this date. Substitutions are allowed at any time but must be submitted in writing.

ATTENDANCE

The course chairs reserve the right to refuse admission to anyone whose presence is considered to be incompatible with the course objectives.

FAST, EASY & SECURE REGISTRATION ONLINE

Click Here to Register Online

TRAVEL GRANTS FOR FELLOWS

A small number of grants of up to \$650 for travel expenses are available for fellows who plan to attend this program.

Send your CV to:

Karen Johnston
(**KJohnston@broad-water.com**)
to apply.

**CVs must be received by
July 20, 2023
for consideration.**

COMMERCIAL SUPPORT

Various medical companies have been invited to exhibit at this course. Full disclosure of financial and other support will be disclosed in the course syllabus materials.

DISCLOSURE POLICY

Medical Education Resources ensures balance, independence, objectivity, and scientific rigor in all our educational activities. In accordance with this policy, MER identifies relevant financial relationships with its instructors, content managers, and other individuals who are in a position to control the content of an activity. Reported relevant financial relationships are mitigated by MER to ensure that all scientific research referred to, reported, or used in a CE activity conforms to the generally accepted standards of experimental design, data collection, and analysis. MER is committed to providing learners with high-quality CE activities that promote improvements or quality in health care and not the business interest of an ineligible company.

Hotel / Lab Facility

The Westin Memphis Beale Street

170 Lt. George W. Lee Avenue
Memphis, TN 38103
Tel: 901-334-5900

Room Rate

\$215.00 (plus tax) for single
or double occupancy

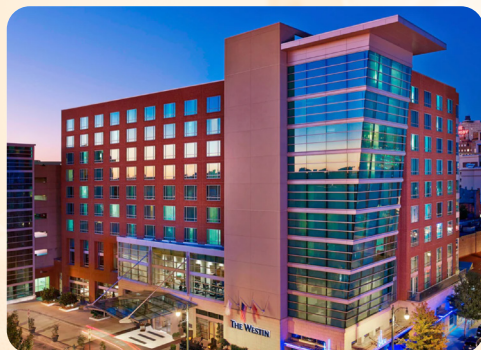
Reservations Procedure

Please call **800-937-8461** and ask to book a room in the **BroadWater block** to receive the contracted group rate.

Or **CLICK HERE TO BOOK ONLINE**

Deadline

It is recommended that participants book their hotel rooms as soon as possible, as space will fill rapidly. Reservations at the group rate may not be available after **September 8, 2023** or if the room block is full.



LAB FACILITY

The lectures and lab sessions will take place at:

The Medical Education & Research Institute (MERI)

44 South Cleveland
Memphis, TN 38104

All labs will utilize only adult cadavers.

Shuttle transportation will be provided between The Westin Memphis Beale Street and MERI at the beginning and end of each day of the course.

FOR ADDITIONAL INFORMATION PLEASE CONTACT:

KA Planning Office
301 S. County Farm Rd.
Suite L
Wheaton, IL 60187 USA
T: (630) 681-1040
F: (630) 682-5811
E: K.Johnston@broad-water.com
W: broad-water.com

BOOK ONLINE



301 S. County Farm Road, Suite L
Wheaton, IL 60187 USA

www.Broad-Water.com

Inaugural Kinematic Knee Alignment Course

October 13-14, 2023