

Sept. 20-21, 2024

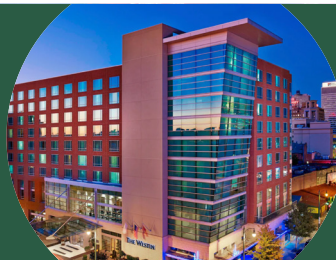
2ND ANNUAL

Kinematic Knee Alignment Course

COURSE CO-CHAIRS

Marcus C. Ford, MD

Michael D. Hellman, MD



MEDICAL EDUCATION
AND RESEARCH INSTITUTE

THE WESTIN HOTEL
BEALE STREET

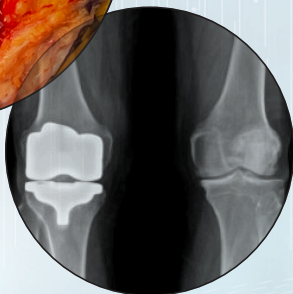
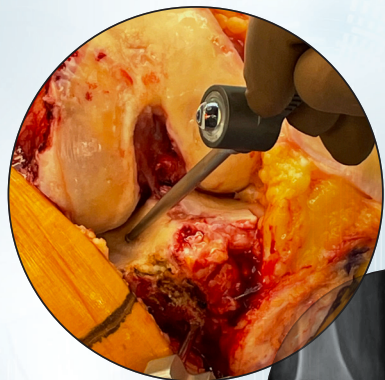
MEMPHIS, TN

PROGRAM CHAIR

Nicholas Brown, MD

ASST. PROGRAM CHAIR

Christopher T. Holland, MD



JOINTLY PROVIDED BY:



Campbell Clinic Foundation
MOVING LIVES





Our Mission

The Campbell Clinic Foundation exists to support medical education, orthopaedic research and patient care and outreach. We are affiliated with Campbell Clinic Orthopaedics, an internationally-recognized pioneer in orthopaedic surgery and group of orthopaedic physicians, researchers and allied health professionals located in the Mid-South region.

The Foundation facilitates surgeon education through medical residency and fellowship programs as well as leading-edge orthopaedic research and is committed to lifelong bone and joint health for all through diverse community outreach programs.

Dear Colleague:

We are excited to announce the second annual **Kinematic Knee Alignment Course**.

Randomized controlled trials have shown superior clinical outcomes for kinematic alignment (KA) when compared to traditional mechanical alignment (MA) TKA. Now with reported excellent mid and long-term survivorship, KA is becoming a mainstream treatment option. Through lectures and cadaveric sessions, participating surgeons will have the opportunity to learn KA philosophy from world experts and execute surgical techniques with both manual instrumentation and cutting-edge surgical technology.

We hope you'll join us in Memphis in September!

Best regards,

Marcus C. Ford, MD
Michael D. Hellman, MD
COURSE CO-CHAIRS

Nicholas Brown, MD
PROGRAM CHAIR
Christopher T. Holland, MD
ASST. PROGRAM CHAIR

Course Co-Chairs

Michael D. Hellman, MD

Attending Orthopaedic Surgeon
ROCKHILL ORTHOPAEDIC SPECIALISTS,
LEE'S SUMMIT, MO

Marcus C. Ford, MD

*Professor, Hip and Knee Reconstruction/
Preservation*
UNIVERSITY OF TENNESSEE HEALTH SCIENCE
CENTER, CAMPBELL CLINIC DEPARTMENT
OF ORTHOPAEDIC SURGERY AND BIOMEDICAL
ENGINEERING, GERMANTOWN, TN

Program Chairs

PROGRAM CHAIR

Nicholas Brown, MD

Associate Professor of Orthopaedic Surgery
LOYOLA UNIVERSITY MEDICAL CENTER,
MELROSE PARK, IL

ASST. PROGRAM CHAIR

Christopher T. Holland, MD

Total Joint Replacement Specialist
CAMPBELL CLINIC, GERMANTOWN, TN

Who Should Attend

**Orthopedic surgeons in practice performing TKA. Fellows
and upper-level residents going into adult reconstruction.**

Invited Faculty

Stephen M. Engstrom, MD

Vanderbilt University Medical Center
NASHVILLE, TN

Joseph W. Greene, MD

Louisville Hip and Knee Institute
LOUISVILLE, KY

Bryan Haughom, MD

Orthopedic Physicians Alaska
ANCHORAGE, AK

Vincent Massé, MD

Hôpital Maisonneuve-Rosemont
MONTREAL, CANADA

John J. Mercuri, MD, MA

Geisinger Musculoskeletal Institute
SCRANTON, PA

Jonathon M. Spanyer, MD

OrthoCincy
CINCINNATI, OH

Jeremy O. Statton, MD

Arthritis & Total Joint Specialists
ATLANTA, GA

Faculty subject to change.

Course Objectives

As a result of this activity, participants should be better able to:

- Define modern knee anatomy and its relationship to KA philosophy
- Explain the differences between Kinematic Alignment, Manual Alignment and many advertised personalized alignment techniques
- Share published outcomes on KA
- Provide participants with a hands-on cadaver experience with both manual instrumented KA technique and robotic KA technique

PHYSICIAN ACCREDITATION

In support of improving patient care, this activity has been planned and implemented by Medical Education Resources (MER) and BroadWater and CCF. MER is jointly accredited by the Accreditation Council for Continuing Medical Education (ACCME), the Accreditation Council for Pharmacy Education (ACPE), and the American Nurses Credentialing Center (ANCC), to provide continuing education for the healthcare team.



JOINTLY ACCREDITED PROVIDER™
INTERPROFESSIONAL CONTINUING EDUCATION

CREDIT DESIGNATION

Medical Education Resources designates this live activity for a maximum of *10.25 AMA PRA Category 1 Credits™*. Physicians should claim only the credit commensurate with the extent of their participation in the activity.

JOINT PROVIDERSHIP

This program is jointly provided by Medical Education Resources, Inc., Campbell Clinic Foundation and BroadWater, LLC.

CLICK TO REGISTER ONLINE

Program

FRIDAY
SEPTEMBER
20

7:00 AM	Shuttles Depart Westin Beale Street to MERI Lab
7:20	Registration & Continental Breakfast
8:00	Welcome

SESSION 1

8:10	Modern Understanding of Knee Anatomy
8:25	History of Alignment Techniques
8:40	Survivorship of Kinematic Alignment
8:55	Discussion
9:10	Published Outcomes of Kinematic Alignment
9:25	Biomechanical Studies in Support of Kinematic Alignment
9:40	Why NOT Switch to Kinematic Alignment? Perspective from an MA Surgeon
9:55	Discussion
10:10	Refreshment Break and Exhibits
10:35	Fundamental Principles of Kinematic Alignment
10:50	Learning Curve with Calipered Kinematic Alignment—Avoiding Pitfalls
11:05	Application of KA to Difficult Cases—Where's the Limit to KA?
11:20	Discussion
11:35	Potential Complications of Kinematic Alignment
11:50	Panel Discussion
12:05 PM	Lunch and Exhibits

SESSION 2

1:15	Cadaver Lab—Calipered KA with Manual Instrumentation
3:45	Adjourn
3:55	Shuttles Depart MERI Lab to the Westin Hotel
6:00 PM	Dinner and Discussion with Faculty and Participants
8:00	Adjourn



*Executing KA
with
Robotics*

Program

SATURDAY

SEPTEMBER

21

7:00 AM Shuttles Depart Westin Beale Street to MERI Lab

7:15 Breakfast

7:45 **Welcome**

SESSION 3

7:50 Faculty Case Presentations and Group Discussion

8:30 Outcome Data of Advanced Technology in TKA

8:50 Discussion

8:55 Executing KA with Custom Cutting Guides
and Navigation

9:15 Discussion

9:20 Executing KA with Robotics

9:40 Panel Discussion

9:50 Refreshment Break

10:10 Proceed to Lab

SESSION 4

10:20 Cadaver Lab with KA Robotics and Technologies

12:30 PM Grab-and-Go Lunch and Adjourn

12:40 Shuttles to Airport



*Biomechanical Studies
in Support of
Kinematic Alignment*

Program subject to change.

[CLICK TO REGISTER ONLINE](#)

Registration

REGISTRATION FEES

Surgeons: \$995

Residents/Fellows: \$745

Registration includes course materials and sessions on Friday and Saturday.

EARLY BIRD REGISTRATION DISCOUNT!

Register by May 1st and receive a \$250 discount. Use coupon code:

Early2024

REGISTRATION

Register early as the space will fill rapidly. Individuals who register after the course is full will be placed on a wait list and contacted if space becomes available.

CANCELLATION

A full refund will be provided, less a \$150 administrative fee, dependent upon written notice being received by **August 15, 2024** by email to: **KJohnston@broad-water.com**.

Refunds will not be made after this date. Substitutions are allowed at any time but must be submitted in writing.

ATTENDANCE

The course chairs reserve the right to refuse admission to anyone whose presence is considered to be incompatible with the course objectives.

FAST, EASY & SECURE REGISTRATION ONLINE

Click Here to Register Online

TRAVEL GRANTS FOR FELLOWS

A small number of grants of up to \$500 for travel expenses are available for fellows who plan to attend this program.

Send your CV to:

Karen Johnston
(**KJohnston@broad-water.com**)
to apply.

CVs must be received by July 9, 2024 for consideration.

COMMERCIAL SUPPORT

Various medical companies have been invited to exhibit at this course. Full disclosure of financial and other support will be disclosed in the course syllabus materials.

DISCLOSURE POLICY

Medical Education Resources ensures balance, independence, objectivity, and scientific rigor in all our educational activities. In accordance with this policy, MER identifies relevant financial relationships with its instructors, content managers, and other individuals who are in a position to control the content of an activity. Reported relevant financial relationships are mitigated by MER to ensure that all scientific research referred to, reported, or used in a CE activity conforms to the generally accepted standards of experimental design, data collection, and analysis. MER is committed to providing learners with high-quality CE activities that promote improvements or quality in health care and not the business interest of an ineligible company.

Hotel / Lab Facility

The Westin Memphis Beale Street

170 Lt. George W. Lee Avenue
Memphis, TN 38103
Tel: 901-334-5900

Room Rate

\$205.00 (plus tax) for single
or double occupancy

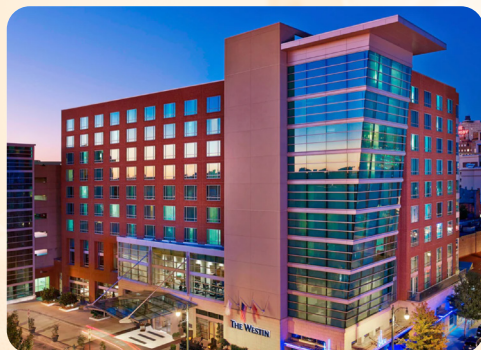
Reservations Procedure

Please call **800-937-8461** and ask to book a room in the **BroadWater block** to receive the contracted group rate.

Or **CLICK HERE TO BOOK ONLINE**

Deadline

It is recommended that participants book their hotel rooms as soon as possible, as space will fill rapidly. Reservations at the group rate may not be available after **August 24, 2024** or if the room block is full.



LAB FACILITY

The lectures and lab sessions will take place at:

The Medical Education & Research Institute (MERI)

44 South Cleveland
Memphis, TN 38104

All labs will utilize only adult cadavers.

Shuttle transportation will be provided between The Westin Memphis Beale Street and MERI at the beginning and end of each day of the course.

FOR ADDITIONAL INFORMATION PLEASE CONTACT:

Karen Johnston
KA Planning Office
111 W. Wesley Street
Suite 2
Wheaton, IL 60187 USA
T: (630) 681-1040 X309
F: (630) 682-5811
E: KJohnston@broad-water.com
W: broad-water.com

BOOK ONLINE



111 W. Wesley Street, Suite 2
Wheaton, IL 60187 USA

Broad-Water.com

Inaugural Kinematic Knee Alignment Course

September 20-21, 2024